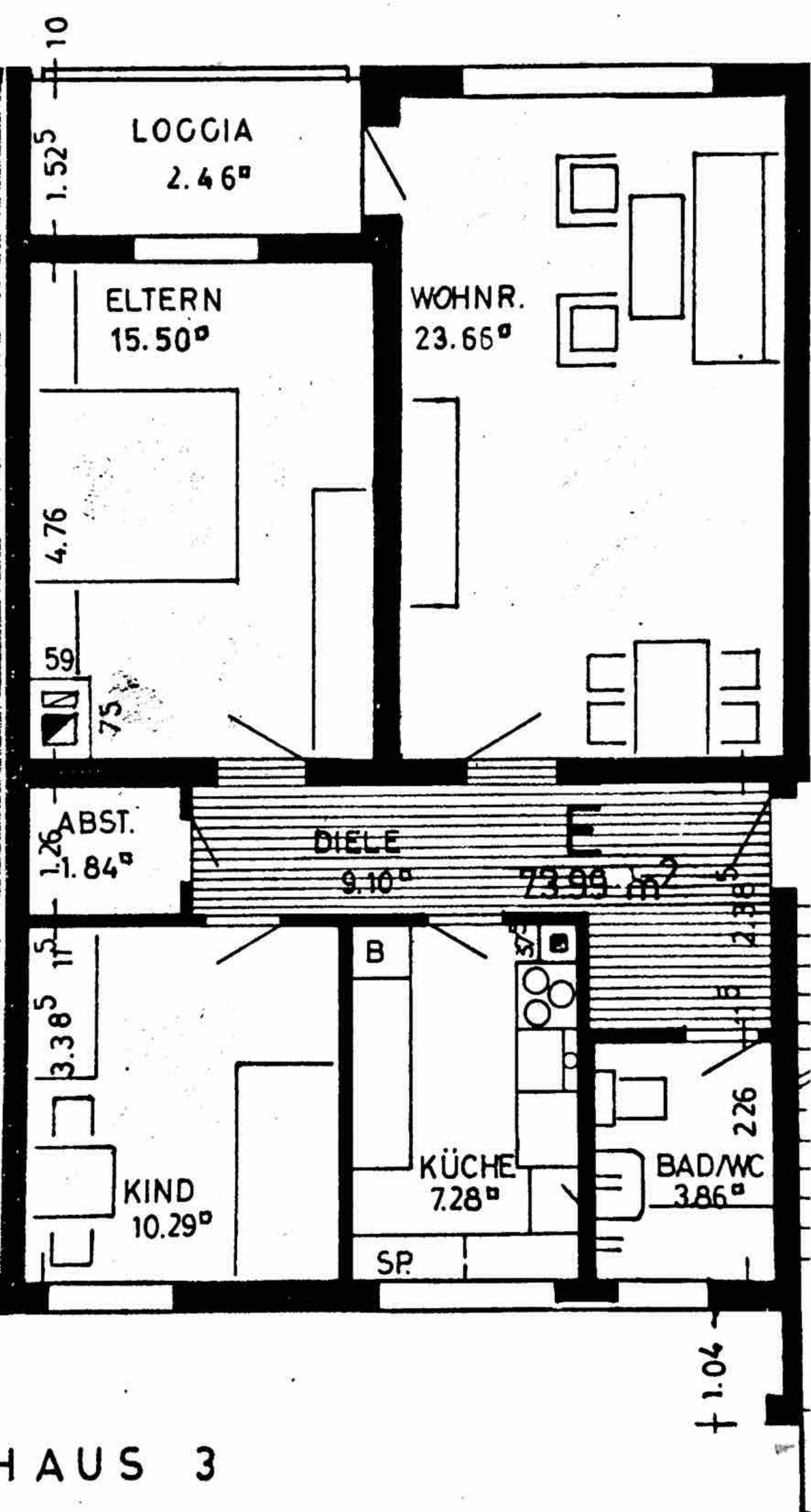


			3.32 ⁵	36 ^P		30
h	24	3.45		24	3.82	
h	24	1.51	115	4.00	1.82	2
h	1.03 ²⁵	1.26	1.03 ²⁵	0.98 ⁷⁵	2.51	0.98 ⁷⁵
24		1.26			1.26	



						10
49	1.26	1.99	1.76	615	885	925
	1.26		885		885	
1	24	3.135	115	2.26	175	1.76